

Gellner Industrial, LLC



The plant has been operating since March 1, 2000. We have an excellent safety record with no emergency calls to the fire department or ambulance in over 25 years of operation. The driveway leads through the woods to the facility

We are in close proximity to Interstates 80 and 81 in Northeastern Pennsylvania.



This is the entrance to the production facility. The production facility is 40 feet high and 42 feet wide. A generator can be seen to the right of the building that can power the entire plant from the most basic 120 volt outlet to the 480 volt motors operating in the plant.

Raw Material Unloading Stations

Station #2 in the foreground and station # 1 in the distance.

Containment dikes for tankers to pull into to contain any spills. The stations are small clear plastic sheds to keep weather off the valves and electronics to operate the closed circuit filling of the bulk monomer tanks. In over 25 years of operation we have never had a spill.



Bulk Monomer Storage

Surge tank in the foreground followed by five bulk monomer storage tanks. Unloading station #1 & #2 can also be seen. Beyond the unloading stations is an 1,800 acre mountain and hunting club.





2,300 gallon reactor PV-1

Top view of mezzanine of production area
and 2,300 gallon reactor.



4,000 gallon reactor PV-2

Top view of mezzanine of production area
and 4,000 gallon reactor.



2,300 gallon reactor PV-1 downstairs

The reactor is suspended 17 feet above the downstairs production area. There are no structural steel columns in the production area. There is a clear span with no columns over the 40 foot by 70 foot production area.

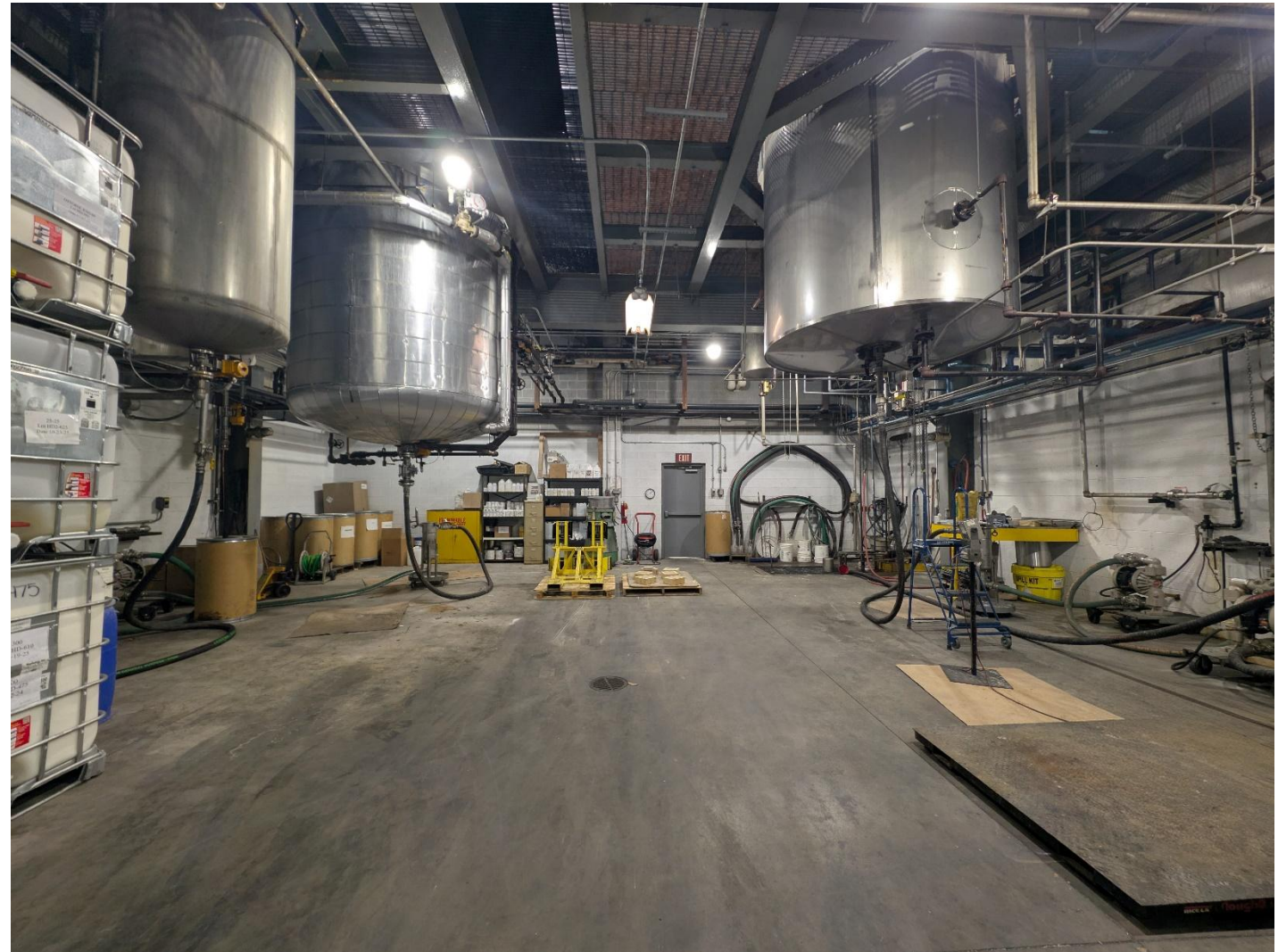


4,000 gallon reactor PV-2

This reactor is also suspended 17 feet above the production area.

Downstairs production area

Reactors PV-1 and PV-2, nice open work area, no head bangers.



Bulk finished product storage

Three 12,000 gallon storage tanks
with mixing and steam heat capability.





Finished product loading station

Concrete pad has a swale to contain any spills. Also, contains gangway for safe access to the top of tanker.



Bulk finished product storage

Product and steam lines going to and from the storage tanks. Part of the gangway can be seen on the left side of the photo with the sign Carbis.

Control Room

Desktop computer to interface with the digital control system. Graphics to control the process can be seen on the screen.

